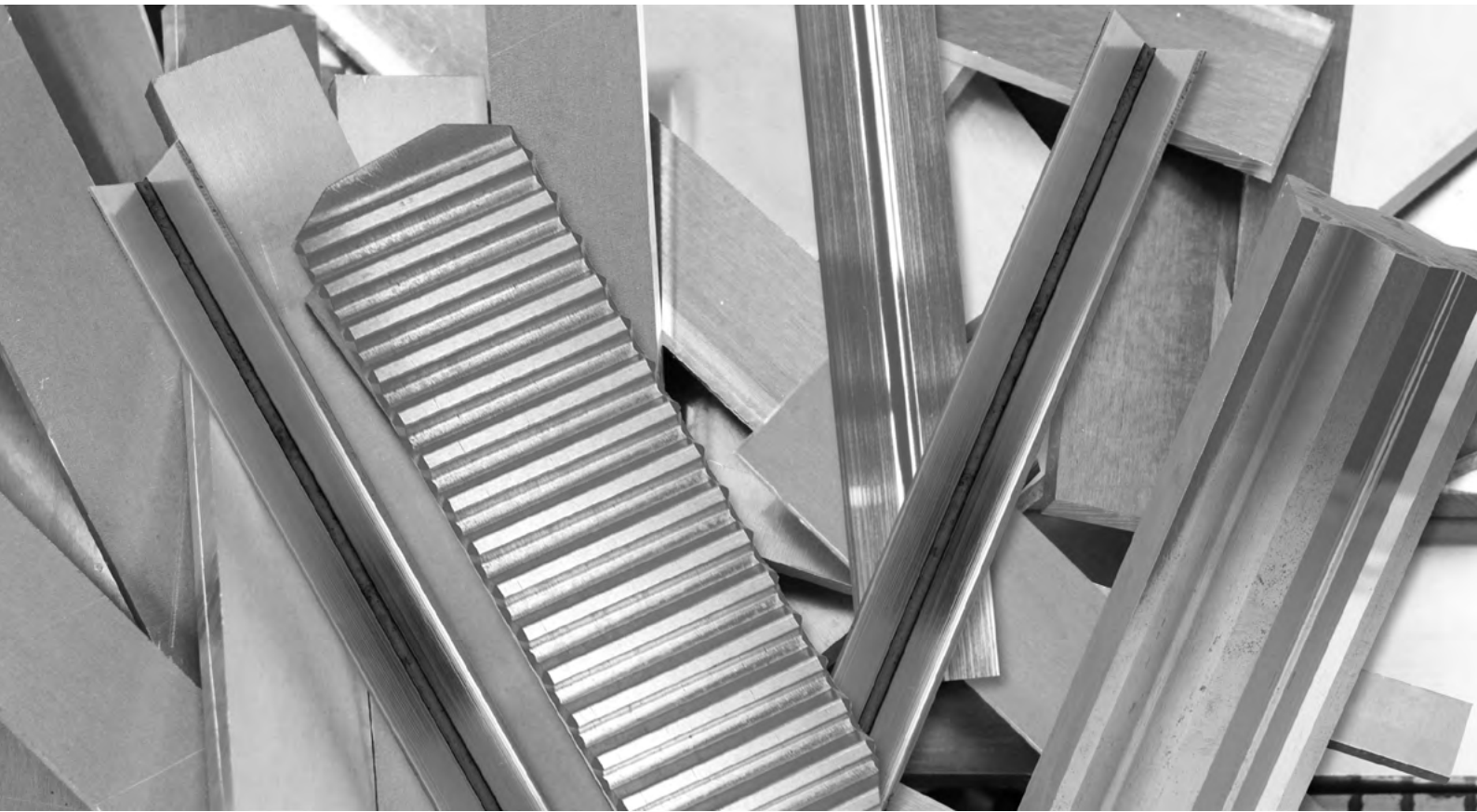


Quality Made in Germany since 1924



Superfinishing in flat and profile grinding

Superfinishing in flat and profile grinding

You have the surfaces - we take care of the finish. Our products are always called for when surfaces cannot be further refined with conventional vitrified or resin-bonded grinding wheels. Contrary to abrasive belts, they can also be used to finish hard to reach surfaces.

In ARTIFEX tools, abrasive grains such as silicon carbide or aluminium oxide are flexibly embedded in elastic materials, such as foamed polyurethane (P) or rubber (Rplus). As a result, our grinding and polishing wheels are sponge-soft, finely porous or hard, but always elastic. Depending on the application, the specifically matched composition of grain and bonding results in the desired finish.

WORKPIECES

Flat steel | Blocks | Plates | Profiles | Runners | Tracks

MATERIAL

For example 100Cr6 (HRC 60) |
17MnCr6 (HRC 63) |
42CrMo4

MACHINES

Conventional and CNC flat grinding machines

PROCESS DESCRIPTION

Flat grinding | Profile grinding

PROCESS SETUP

Cutting speed v_c :	35 ms ⁻¹
Infeed a_e :	30 µm
Feed rate v_{fa} :	1 m/min
Cooling lubricants :	Water Emulsion Oil

RESULT

Surface roughness :	Rz < 1 µm
Material removal :	3 - 8 µm

TOOL

Product :	ARTIFEX EK 600 MFP
Bonding :	Foamed Polyurethane hard
Hardness :	M (medium)
Grit size :	Aluminium oxide F600
Delivery form :	Peripheral wheels pre-profiled
Dimension :	OD Ø 150 - 400 mm

ADVANTAGES

- Complete process in one clamping of the workpiece
- Low risk of grinding burns
- No geometric changes
- Cutting off the peaks of the roughness profile
- No further process or machinery necessary



The ARTIFEX promise

We stand for tools that guarantee the highest quality standards. All ARTIFEX products are „Made in Germany“ and their above-average service life speaks for itself.

Our service: You have individual requirements, we offer customised solutions regardless of the material, shape or dimensions. We will gladly advise you on your premises.